

Introduction to Psychology

PSY 101-001

Monday & Wednesday: 116 Farrell Hall 11:30-12:20

Friday: 118 Psychology 10:20-12:10

Instructor

Kimberly Fenn, Ph.D.

Office Hours: Wednesday 12:30pm – 1:30pm

Zoom link: <https://msu.zoom.us/j/98990200991>

Zoom pwd: PSY101

Email: kfenn@msu.edu

Graduate Teaching Assistant

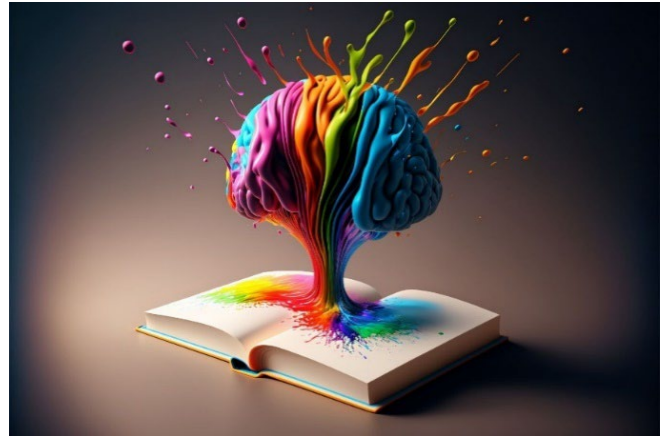
Matthew Marvin

Office Hours: Thursday 1:30pm-2:30pm

Zoom link: <https://msu.zoom.us/j/2944894649>

Zoom pwd: PSY101

Email: marvinm5@msu.edu



Undergraduate Teaching Assistants

Anna Brandt

Zoom office Hours: Monday 3:00pm-4:00pm

Zoom link: <https://msu.zoom.us/j/97912991802>

Zoom pwd: PSY101

Email: brandt19@msu.edu

Claire Christin

Office Hours: Monday 1:00pm-2:00pm

Zoom link: <https://msu.zoom.us/j/98071173990>

Zoom pwd: PSY101

Email: chris854@msu.edu

Seeun Oh

Office Hours: Tuesday 2:30pm-3:30pm

Zoom link: <https://msu.zoom.us/j/99983763694>

Zoom pwd: PSY101

Email: ohseeun@msu.edu

All office hours will be held via zoom.

All members of the course team are also available by appointment.

Please feel free to email any of us to set up a time.

Course Description

This course is designed to give you a broad overview of the field of psychology. Psychology as a field has had a rather short history. However, its impact on our current understanding of the human experience is significant. In this course, we will review the basic methodology, theories, and findings in the field. Psychology contains several different subfields, such as sensation and perception, memory, neuroscience, social psychology, and clinical psychology. This course will survey both seminal findings and current research in many of these subfields. Because this is an introductory course, it is designed to provide a basic understanding of the principles of the field but will not go into great depth on any of them. If you become interested in a given area, the course team can recommend future classes to take or faculty with whom to work.

Readings

The textbook for this course is called *Psychological Science* by Phelps, Berkman, and Gazzaniga, seventh edition, by W. W. Norton Publishing. The textbook is entirely online and comes packaged with InQuizitive, an online homework resource. If you would prefer a print copy, it is available at an additional cost.

You may purchase the book directly through the publisher [here](#). If you have a print version of the book, you may also purchase access to InQuizitive using the same link. For both, just click on “Purchase options” in the top right corner. The book + InQuizitive is \$65. Access to InQuizitive alone is \$30.

Online Content

There will be two websites associated with the course – the course page on [Desire to Learn \(D2L\)](#) and the homework on the publisher’s website, called InQuizitive. To access the homework, you should first log in to [D2L](#). Then, under Content, go to Homework, and then click on any of the links. After you access the homework through D2L once, your accounts will be linked and you do not need to do it again (so you can just bookmark the page on your computer).

If you do not access the homework through D2L, your InQuizitive grades will not transfer to D2L.

If you need technical assistance, you may consult the Norton [Student help page](#) or [Technical support page](#). If your issue is still not resolved, you can submit a [support request](#).

Exams

All exams will be administered in person.

There will be four exams and one final in this course. **We will drop your lowest exam score.** This means that if you have your desired grade after the fourth exam, you do not need to take the final. You will be responsible for all material associated with the course on the exams. This includes material presented in lecture and information from the book. Note that the lectures and book readings will not be entirely redundant. Some material will be presented in lecture that is not covered in the book and likewise, some material from the book will not be covered in lecture.

The exams will focus primarily on material covered in lecture, but you are responsible for all information. All exams will consist of multiple-choice questions.

Exams on Wednesdays will be 50 minutes (11:30-12:20).

Exams on Fridays will be 90 minutes (10:20-11:50).

Guidelines for the day of the exam:

1. You must be on time. After the first student completes the exam, no more exams will be handed out. This means that you will not be permitted to take the exam and will be given a zero for that exam.
2. You may only have pencils and erasers at your desk. Leave refreshments or other materials in your bag or do not bring them at all.
3. You must turn off anything that makes noise.
4. Please do not wear hats. If you are wearing a baseball cap, you will be required to turn it backward.
5. Smart watches are prohibited.
6. Absolute silence is required. Once the exam has begun, there will be no talking or disruptions.
7. You may not leave the room. Leaving the room will be for emergency bathroom breaks only.
8. **You may not consult with any other individual while taking the exam.**

The four regular exams will **not** be cumulative; chapters associated with each exam are listed on the course schedule. The final exam **WILL** be cumulative, meaning that the final exam will cover material from the entire course.

Make-up exams: Make-up exams will only be given in case of: 1) a documented medical or family emergency, or 2) a documented scheduled conflict, such as a religious holiday or required participation in a university-sanctioned event. In either case, you must send an email to the professor as soon as you are aware of this conflict. In case of a scheduled conflict, you must send this email at least one week in advance of the exam day. Absence from an exam for any other reason will result in a grade of 0 for that exam. However, your lowest exam score will be dropped so if you miss an exam, that will be the score that is dropped.

All make-up exams must be completed within one week of the exam. If you do not complete a make-up exam by this time, you will receive a 0 for the exam.

Homework

Most weeks, you will complete a homework assignment. During the homework, you will be quizzed on course material using a program called InQuizitive. This is a gamified, adaptive homework system that awards points based on your performance. You will also be allowed to bet on your knowledge, to obtain more points. For each assignment, you will be required to accumulate 2000 points. The number of points awarded for each question will depend on the difficulty of the question as well as your performance. Homework will not be graded, per se. If you achieve the 2000 points required, you will receive full credit. There are 13 homework assignments across the semester. **We will drop your three lowest scores.** Links to each homework are posted on D2L under the Homework tab.

InQuizitive will be available to you even after you have completed each assignment so you can use it as a study tool. **Homework assignments are due at 11:59pm on Friday. We will not accept late assignments and will not give extensions, under any circumstances.** This is why you are permitted to drop three. You also may complete the homework early. This means that power outages or loss of internet on the day that the assignment is due, are irrelevant.

Important Note: Your scores will automatically transfer to D2L but this process is NOT immediate and can take up to 48 hours. Please be patient and do not email the course team if your grade is not immediately reflected on D2L.

Research Participation

One fundamental way of learning firsthand about psychological research is to participate in research studies. You can register an account and sign up for studies [here](#). There is a detailed document on the D2L website that provides all of the information that you need to use the system. You can also watch a short, online tutorial [here](#). There is also a link to an online help room for the Sona system posted on D2L.

You will be required to complete **8 hours** of research participation. Details regarding this element of the course are posted on D2L. Any questions, inaccuracies, or problems should be directed to: Audra Jeffrey, the Human Subject Pool Administrator, jeffre22@msu.edu. Her office is Room 100, Psychology Building. It is your responsibility to sign up, participate in experiments, and track your personal history on the computer. Neither the instructor nor the course assistants have a record of your research participation until the end of the course. We do not know how many credits you have or if you have penalty points. **ALL questions regarding research participation must be directed to Audra Jeffrey.**

Restrictions: Some research studies will be conducted online, and asynchronously (meaning that you will be provided a link and can complete the study at any point in time). This type of research is not as educational as standard laboratory experiments. **As such, only two hours of your research requirement may be completed in online, asynchronous studies.** Note that online synchronous studies wherein you meet in a zoom meeting, etc. are different and all hours completed in this type of experiment can be used for your research participation grade.

Age Requirement: If you are not yet 18 years old, you cannot legally consent to participate in research. We have a separate system where you can complete your hours. Please contact Audra Jeffrey, jeffre22@msu.edu to obtain access to this system.

Deadline: Research participation must be completed by the last day of classes, April 25, 2025, at 5:00 pm. There will not be any experiments conducted after this time.

Alternative to research participation: If you do not wish to participate in psychology experiments, you may fulfill this requirement by writing a one-page paper for every hour of research participation for a total of eight one-page papers. A detailed explanation of the paper requirements is posted on D2L. All papers are due by the last day of classes, April 25, 2025, at

5:00 pm. The drop box will close promptly at 5:00 and papers will not be accepted after this time. There will be **no exceptions** to this rule.

Extra Credit

In addition to the assigned research participation, you may participate in additional experiments for extra credit. For each hour, you will earn 2 points onto your final score. The maximum extra credit is 6 hours or 12 points on your final grade. This works out to 3 percentage points. This means that if your final grade was 87%, and you did the full extra credit, your final score would be 90%.

Grading

This course is worth a total of 402 points. Your grade will be calculated as follows:

Exam 1: 80 points

Exam 2: 80 points

Exam 3: 80 points

Exam 4: 80 points

Final exam: 80 points

Total = 320 points

The lowest exam score will be dropped

Homework: 10 assignments at 5 points each = 50 points

There are 13 total assignments but your lowest 3 will be dropped

Research participation: 8 hours at 4 points per hour = 32 points

This is the percentage of each element of the course toward your final grade:

Each exam: 20% (for a total of 80%)

Homework: 12%

Research participation: 8%

Grades will be assigned on the following scale:

4.0: 90-100%

2.5: 75-79%

1.0: 60-64%

3.5: 85-89%

2.0: 70-74%

0: < 60%

3.0: 80-84%

1.5: 65-69%

The point values you need to achieve each grade are listed below. Note that these values take into account decimals. For example, the range for a 4.0 actually starts at 89.5%.

4.0: 360 – 402

2.5: 300 – 319

1.0: 239 – 258

3.5: 340 – 359

2.0: 279 – 299

0: < 239

3.0: 320 – 339

1.5: 259 – 278

The point values reflect rounding to the nearest whole number (i.e. 89.5% = 4.0). Scores cannot be “on the border”. They are one grade or the next. There will be no adjustments because your score is close to the cutoff. Extra credit is the only way to increase your grade. At the end of the semester, if you believe that I made an error in calculating your grade, please let me know. I will check your grade and change it if I have made an error. **This is the only circumstance under which**

I will change a grade. Under no circumstance will I “bump” your grade or give you a special extra credit opportunity. I never do this; please do not ask. **There will be no exceptions.**

Academic Honesty

The Spartan Code of Honor states, "As a Spartan, I will strive to uphold values of the highest ethical standard. I will practice honesty in my work, foster honesty in my peers, and take pride in knowing that honor is worth more than grades. I will carry these values beyond my time as a student at Michigan State University, continuing the endeavor to build personal integrity in all that I do." Article 2.III.B.2 of the Student Rights and Responsibilities ([SRR](#)) states that "The student shares with the faculty the responsibility for maintaining the integrity of scholarship, grades, and professional standards." The Psychology Department adheres to the policies on academic honesty as specified in [General Student Regulations 1.0, Protection of Scholarship and Grades](#); [the all-University Policy on Integrity of Scholarship and Grades](#); and [Ordinance 17.00, Examinations](#).

You are expected to complete all course assignments, including homework, exams, and papers (if you choose not to do the research) without assistance from any source. You are expected to develop original work for this course. You may not submit course work you completed for another course to satisfy the requirements for this course. Students who violate MSU academic integrity rules may receive a penalty grade, including a failing grade on the assignment or in the course. Contact your instructor if you are unsure about the appropriateness of your course work. (See also the [Academic Integrity webpage](#).)

When in doubt, students are urged to ask the instructor about the appropriateness of any practice.

ACADEMIC HONESTY IS EXPECTED IN ALL FACETS OF THIS COURSE.

Turnitin Policy

Consistent with MSU's efforts to enhance student learning, foster honesty, and maintain integrity in our academic processes, I have chosen to use a tool called Turnitin to compare your papers with multiple sources. The tool will compare each paper you submit to an extensive database of prior publications and papers, providing links to possible matches and a 'similarity score.' The tool does not determine whether plagiarism has occurred or not. Instead, I will make a complete assessment and judge the originality of your work. All submissions to this course may be checked using this tool. You should submit papers to Turnitin without identifying information included in the paper (e.g., name or student number), the D2L will automatically show this information to me when I view the submission, but the information will not be retained by Turnitin. If you forget and submit your paper with your identifying information on it, it will be retained in the Turnitin repository.

Generative A.I. Policy

The use of generative AI tools (such as ChatGPT, DALL-E, etc.) is not permitted in this class. Therefore, any use of AI tools for work in this class may be considered a violation of Michigan State University's policy on academic integrity, the Spartan Code of Honor Academic Pledge and Student Rights and Responsibilities, since the work is not your own. The use of unauthorized AI tools will result in a grade of 0 for that aspect of the course.

Inclusive Environment

MSU is committed to creating and maintaining an inclusive community in which students, faculty, and staff can work together in an atmosphere free from all forms of discrimination. The Office of Institutional Equity (OIE) reviews concerns related to discrimination and harassment based on sex, gender, gender identity, race, national origin, religion, disability status, and any other protected categories under the [University Anti-Discrimination Policy](#) and [Policy on Relationship Violence and Sexual Misconduct](#). If you experience or witness acts of bias, discrimination, or harassment, please report these to [OIE](#).

Accommodations for Students with Disabilities

Michigan State University is committed to providing equal opportunity for participation in all programs, services and activities. Requests for accommodations by persons with disabilities may be made by contacting the [Resource Center for Persons with Disabilities](#) at 517-884-RCPD. Once your eligibility for an accommodation has been determined, you will be issued a Verified Individual Services Accommodation ("VISA") form. Please present this form to the instructor at the start of the term and/or two weeks prior to the accommodation date (test, project, etc.).

If you require testing accommodations (additional time, etc.) you must contact me and email your VISA at least one week before the first exam (2/12). There will be a separate testing time for individuals who need additional time because we cannot stay in the exam room later than the scheduled time.

Getting Help

The best way to get help is to come to office hours. The entire course team will all hold regular office hours and are also available at other times, by appointment. During the office hours, we will host an open meeting and anyone who is interested may simply log into the zoom meeting. If you cannot make the scheduled office hours, you may simply contact any of the assistants or instructor to make an appointment for a different time. You may also ask questions via e-mail.

E-mail Policy

E-mail is the best way to contact the course team. Please use the following guidelines when e-mailing us:

- **First, ask yourself this question:** “Can this question be answered by looking at the syllabus or looking on D2L?” If the answer is yes, then you should not send an email!
- Use PSY 101 in the subject line. This makes it clear you are a student in this course asking a question. This helps to prevent e-mails from going directly to the junk folder.
- **Please address the e-mail properly.**
- Proofread your e-mail. Is your question conveyed clearly with correct grammar and spelling? Did autocorrect make it sound super weird?
- Please sign your e-mail with your full name, so we know who you are. We can’t wait to get to know all of you, but maizeandbluearetheworst@gmail.com makes it hard for us to know who you are.
- Be polite.
- **Check your e-mail regularly!** During the course, we will e-mail you from time to time with announcements and reminders. Please read these e-mails as soon as you receive them, and please check your e-mail regularly.