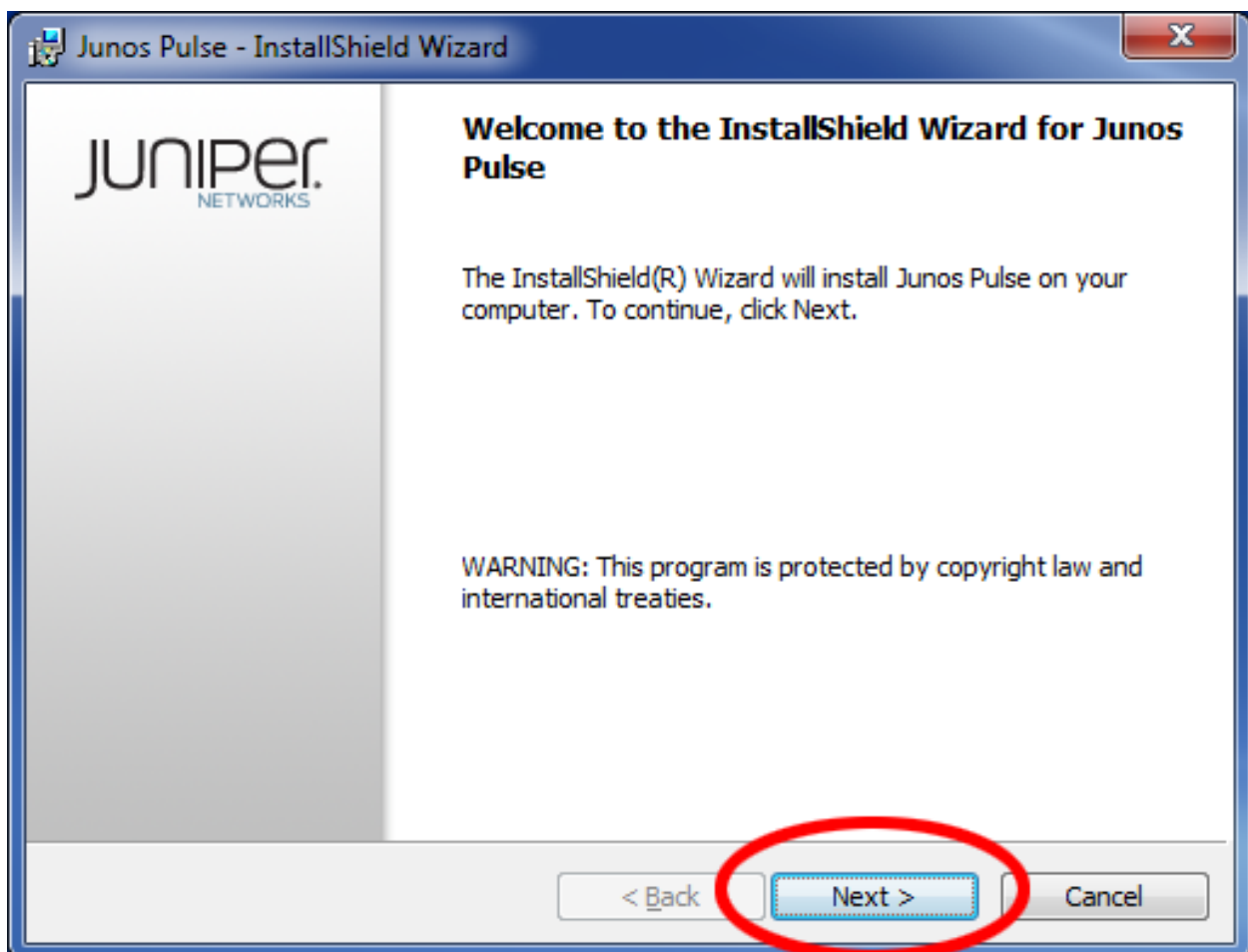


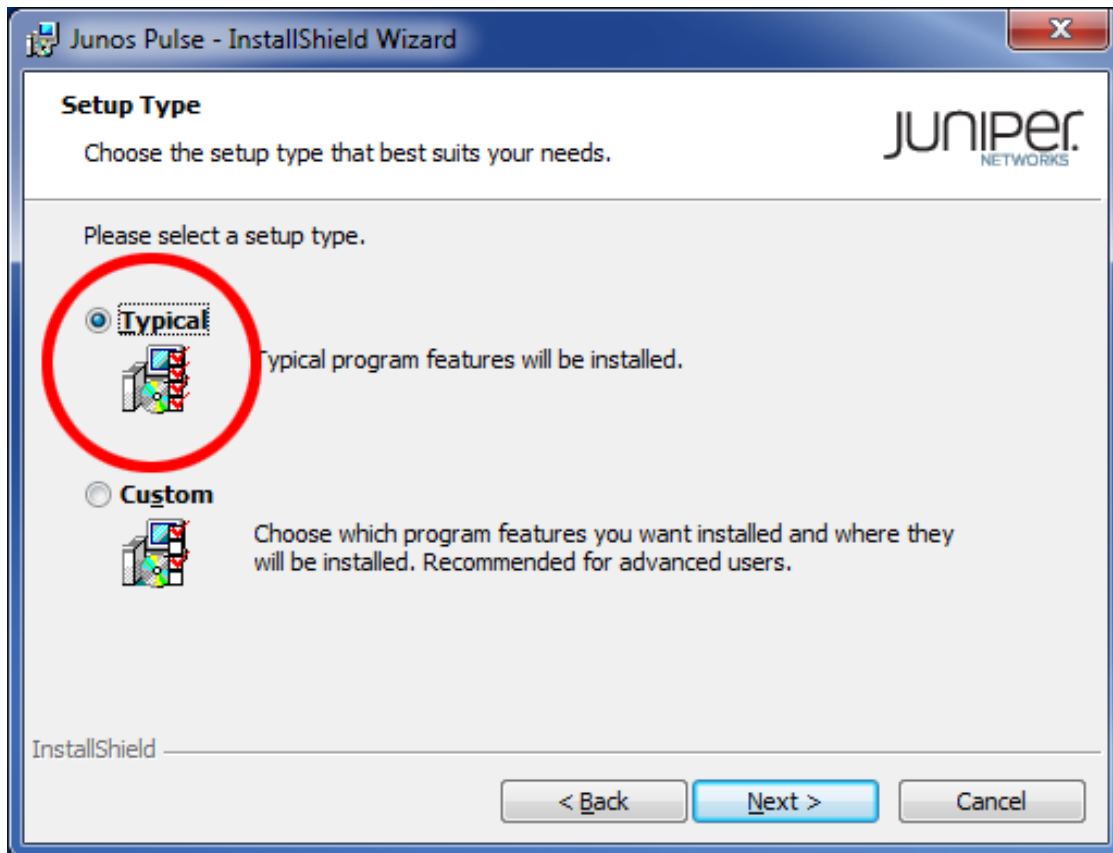
Directions for setting up access to Psychology network drives from a Windows 7 PC.

First step is to install the VPN client needed. You will need to use this client any time you are trying to access the network drives when you are either off campus or using the guest wireless on campus.

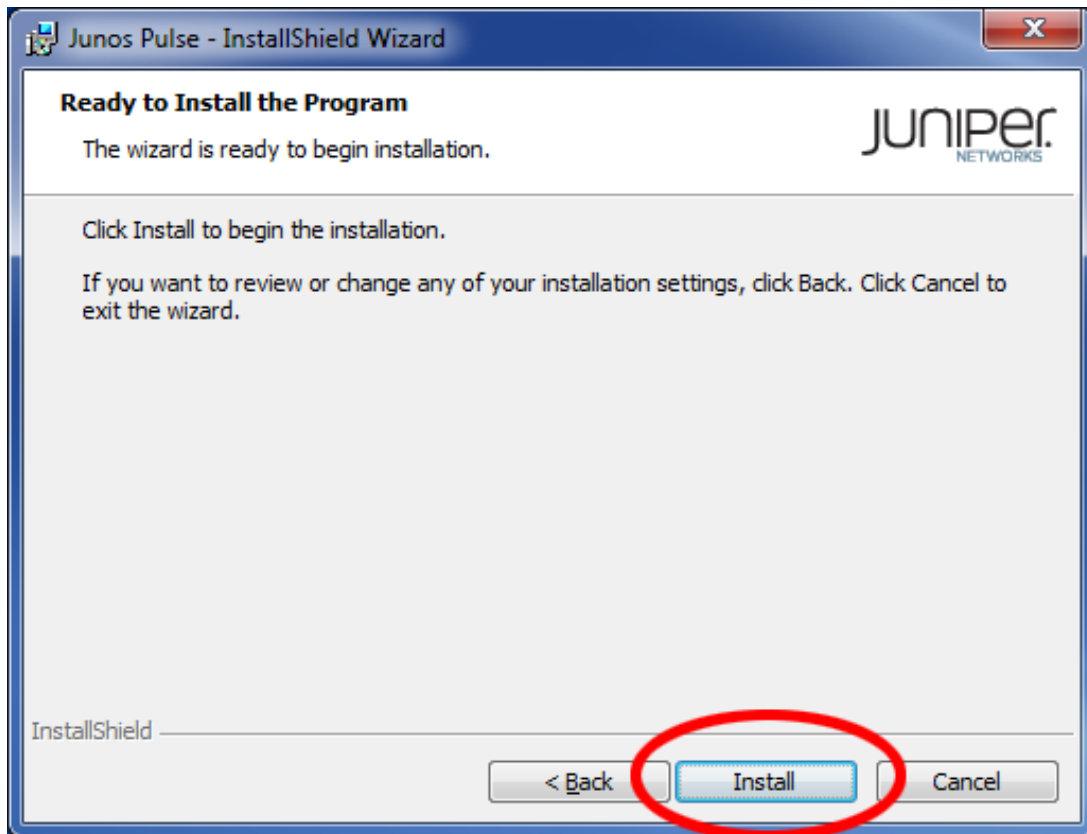
Download the Junos Pulse client from the Psychology website in the Department Resources area. Look for the tab that refers to MSU vpn. Download the Windows 7 client appropriate for your system (either 32 or 64 bit – most Windows 7 machines have tended to be 64 bit, if that one won't run for you, download the 32 bit one). After it's downloaded, run the installer and you'll get this screen. Hit Next.



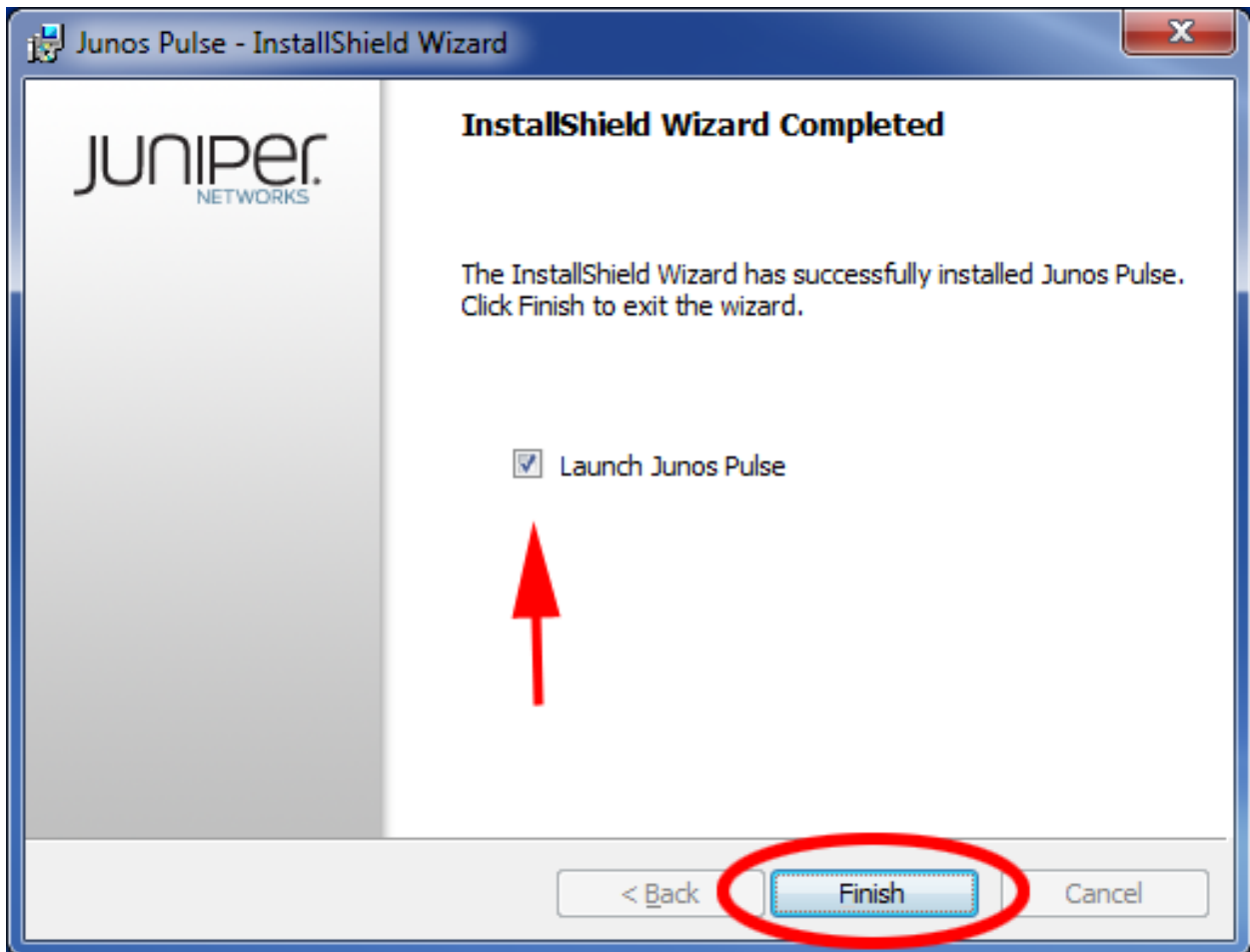
Choose Typical for setup type and hit Next.



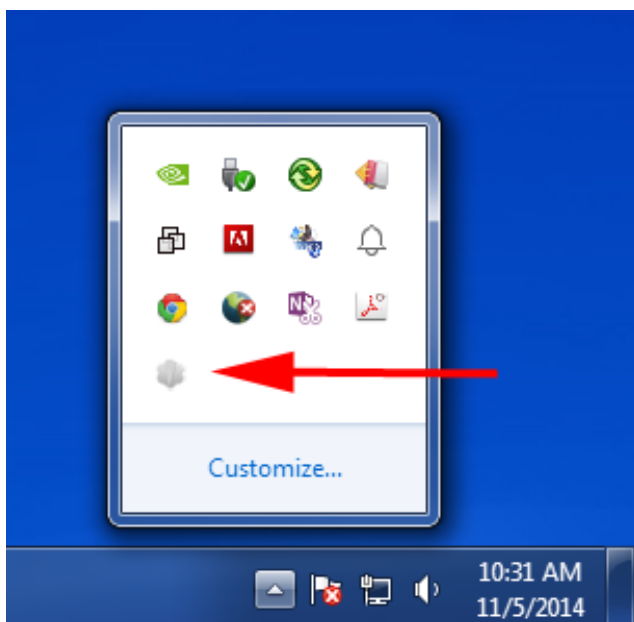
Click on Install.



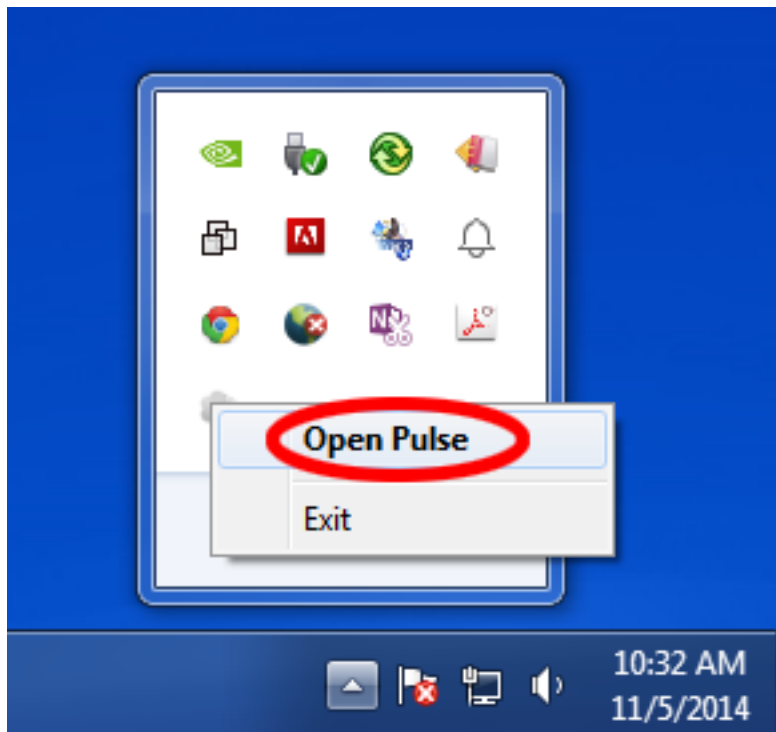
Make sure the Launch Junos Pulse checkbox is selected, and hit Finish.



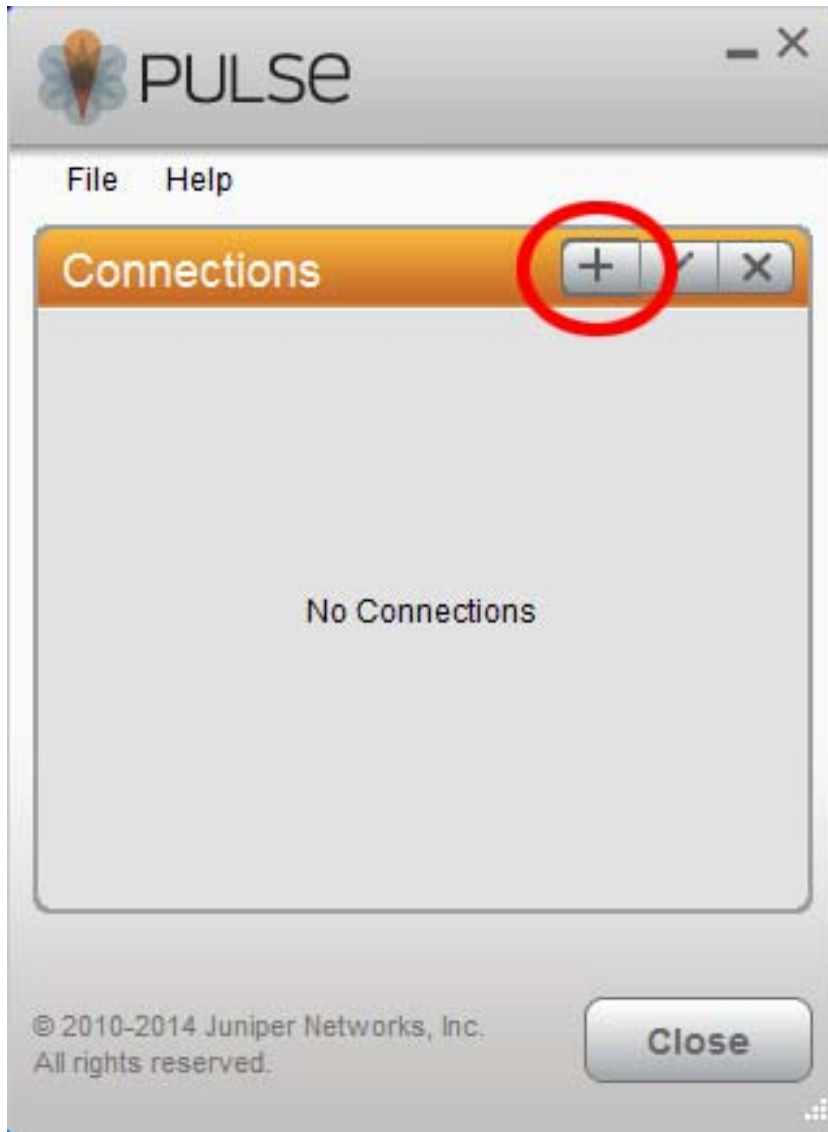
The client will start down in your system tray, with an icon that looks like this.



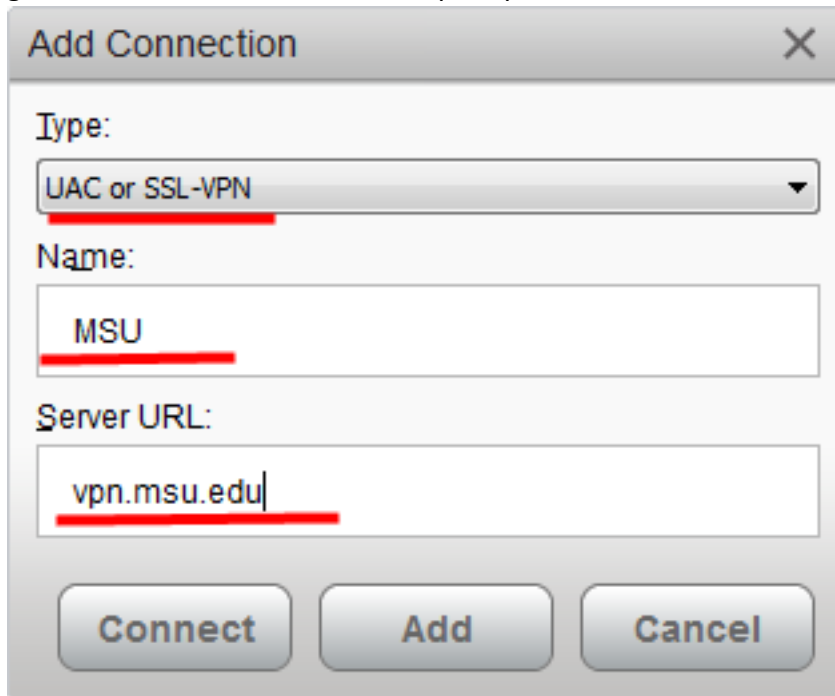
Click on the icon, and select Open Pulse.



That will bring the Pulse client up, and show that you have no connections defined. Click on the plus icon.



The Add Connection box will come up. Make sure you select “UAC or SSL-VPN” for Type, then give the connection a name, and put vpn.msu.edu in the Server Url field. Then hit Connect.



Add Connection [X]

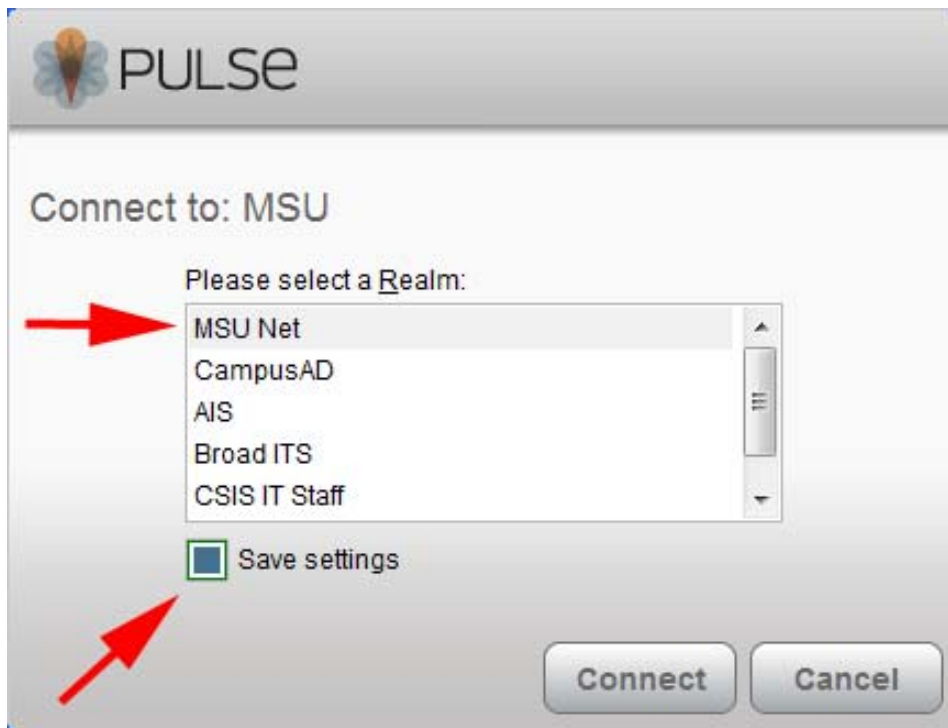
Type:
UAC or SSL-VPN

Name:
MSU

Server URL:
vpn.msu.edu

Connect Add Cancel

You'll next be prompted to select a Realm. Choose “MSU Net” as the Realm. I also strongly suggest you save the settings on this box, or you will be prompted for this every time you connect.



PULSE

Connect to: MSU


Please select a Realm:

- MSU Net
- CampusAD
- AIS
- Broad ITS
- CSIS IT Staff

Save settings

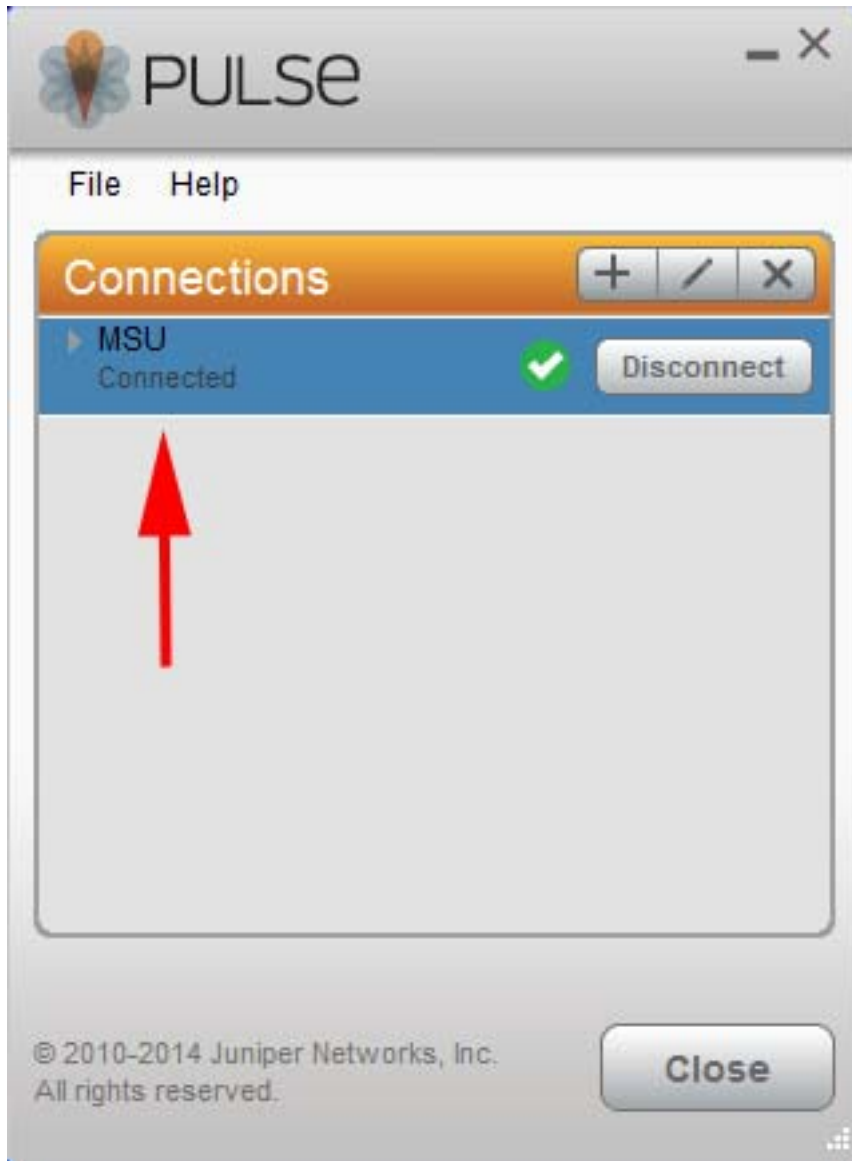
Connect Cancel

Next, fill in your MSU netid for User Name, and your MSU netid password for the Password. I do not recommend saving the settings here, otherwise anyone that can access your computer can connect as you. Hit Connect.



The image shows a software dialog box titled "PULSE" with a logo of a pulse plant. The main heading is "Connect to: MSU". Below this is a grey box containing a question mark icon and the text "Provide the following credentials to complete the connection." There are two text input fields: "User Name:" and "Password:". Red arrows point to the left of each input field. Below the password field is a checkbox labeled "Save settings". At the bottom right are two buttons: "Connect" (highlighted in orange) and "Cancel" (grey).

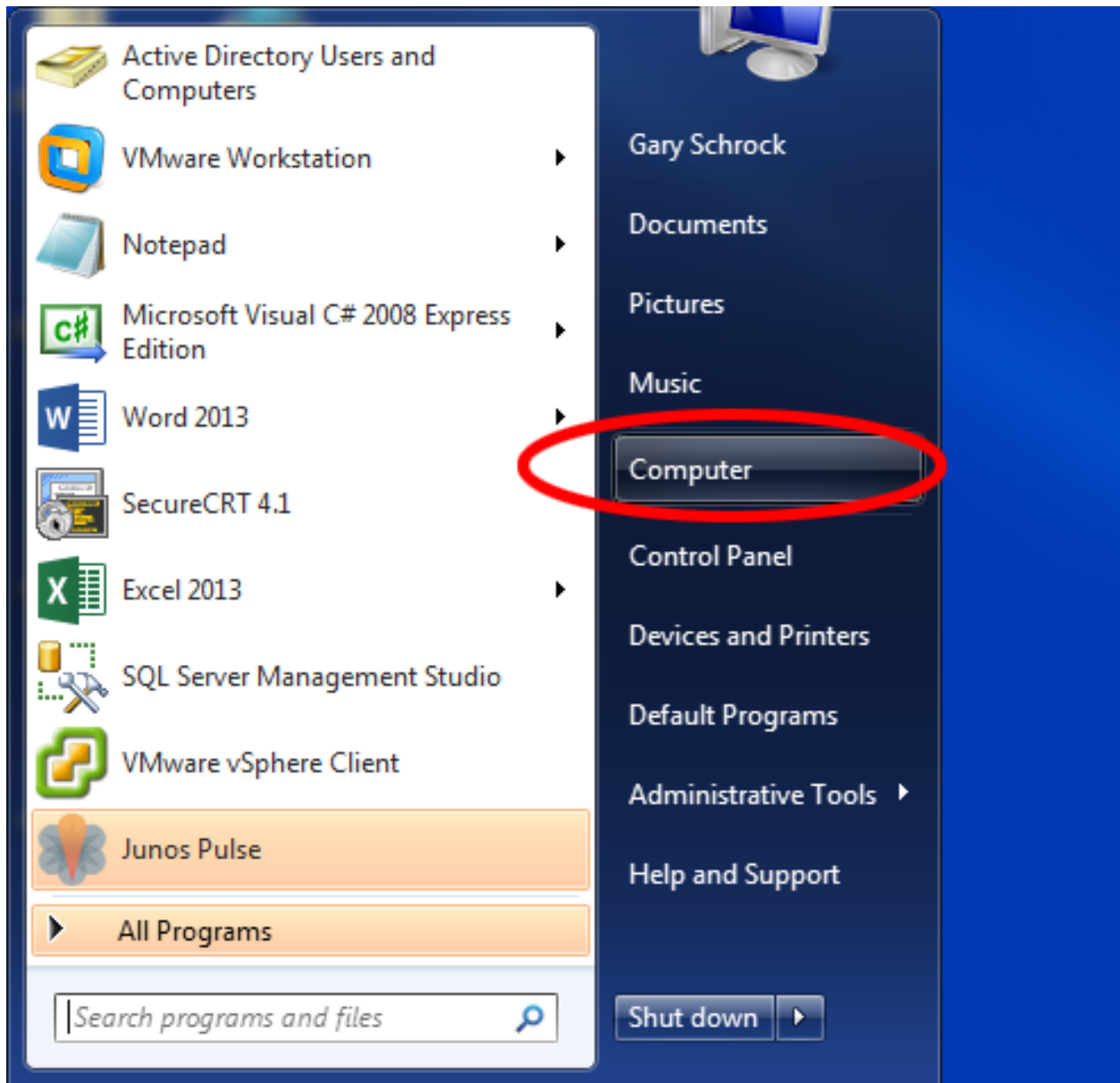
The VPN will then connect, and you'll see a screen that lists MSU under Connections, with a status of Connected.



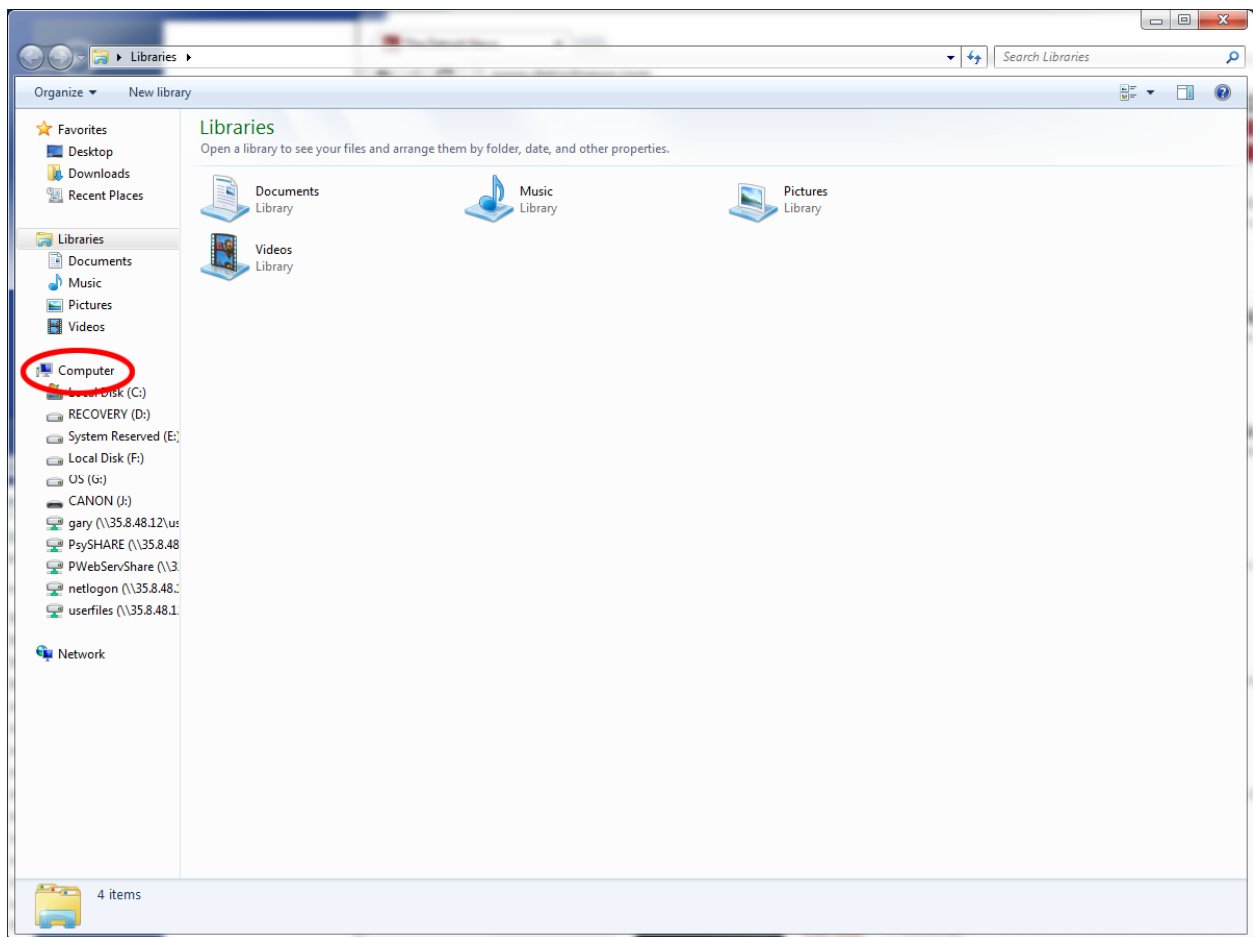
You can then close this, the VPN will continue to run.

Connecting to the network drive

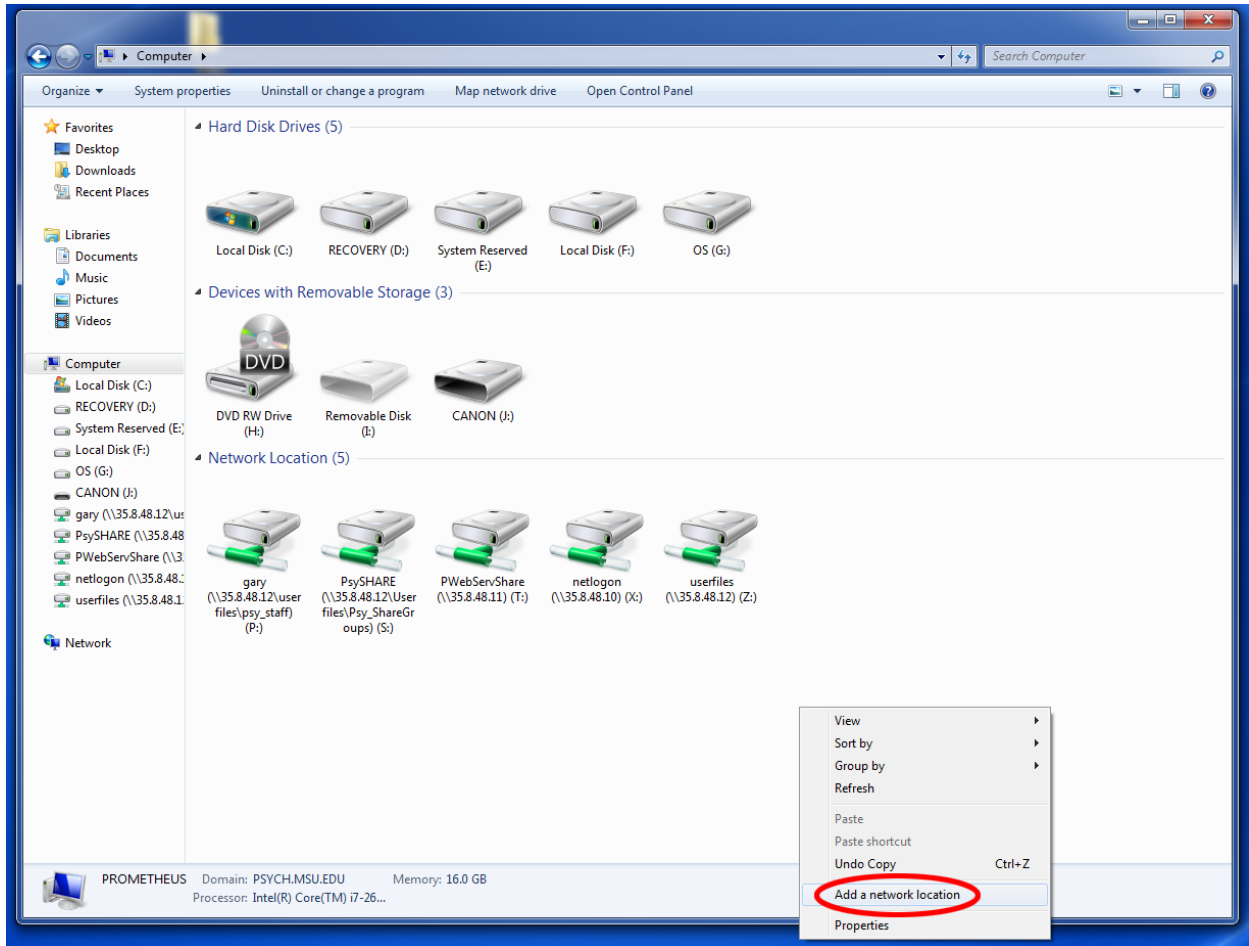
Now that the VPN is running, the next step is to set up the connection to the network drive. Click on the start menu, and select Computer.



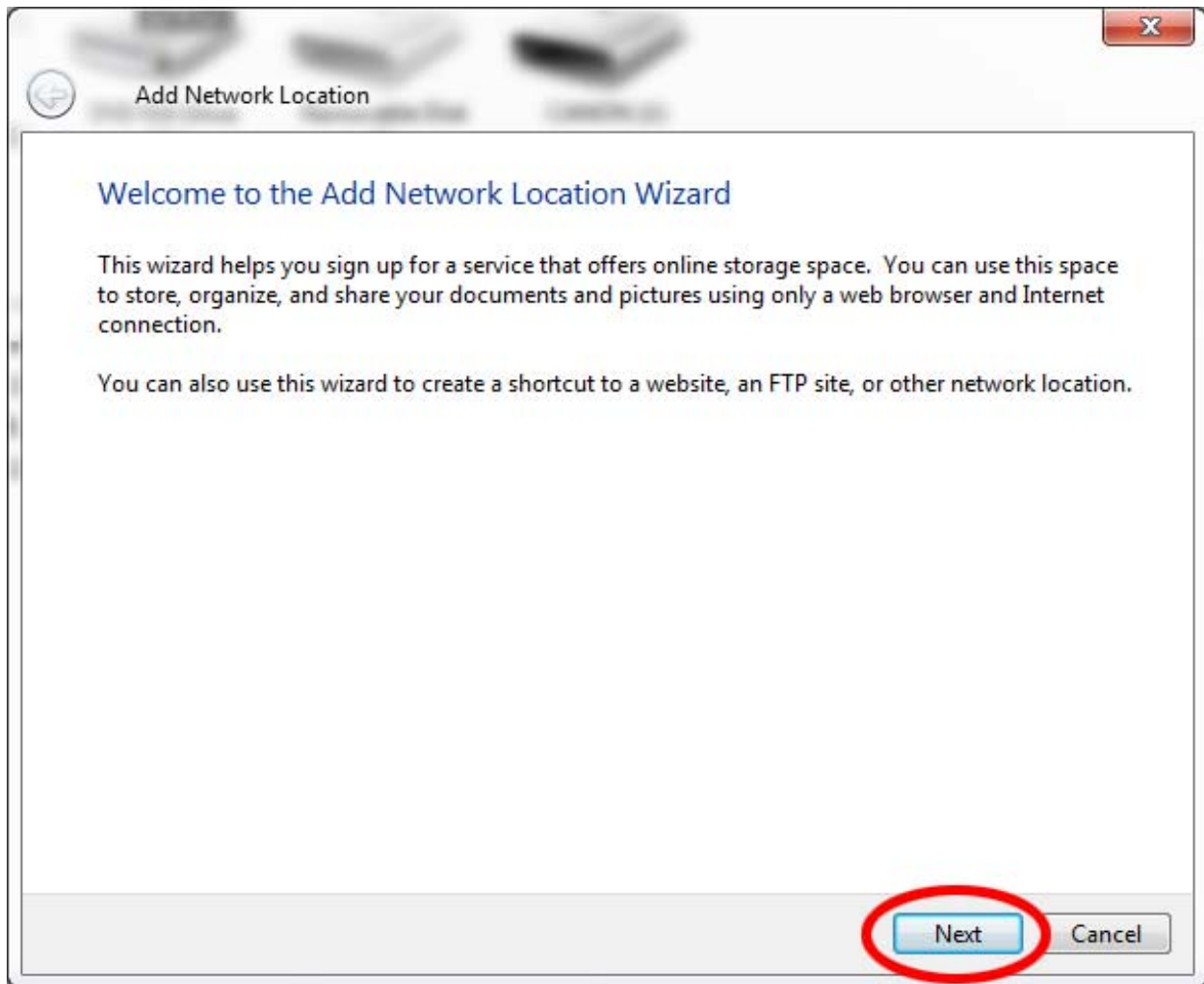
Click on Computer on the left side of this window.



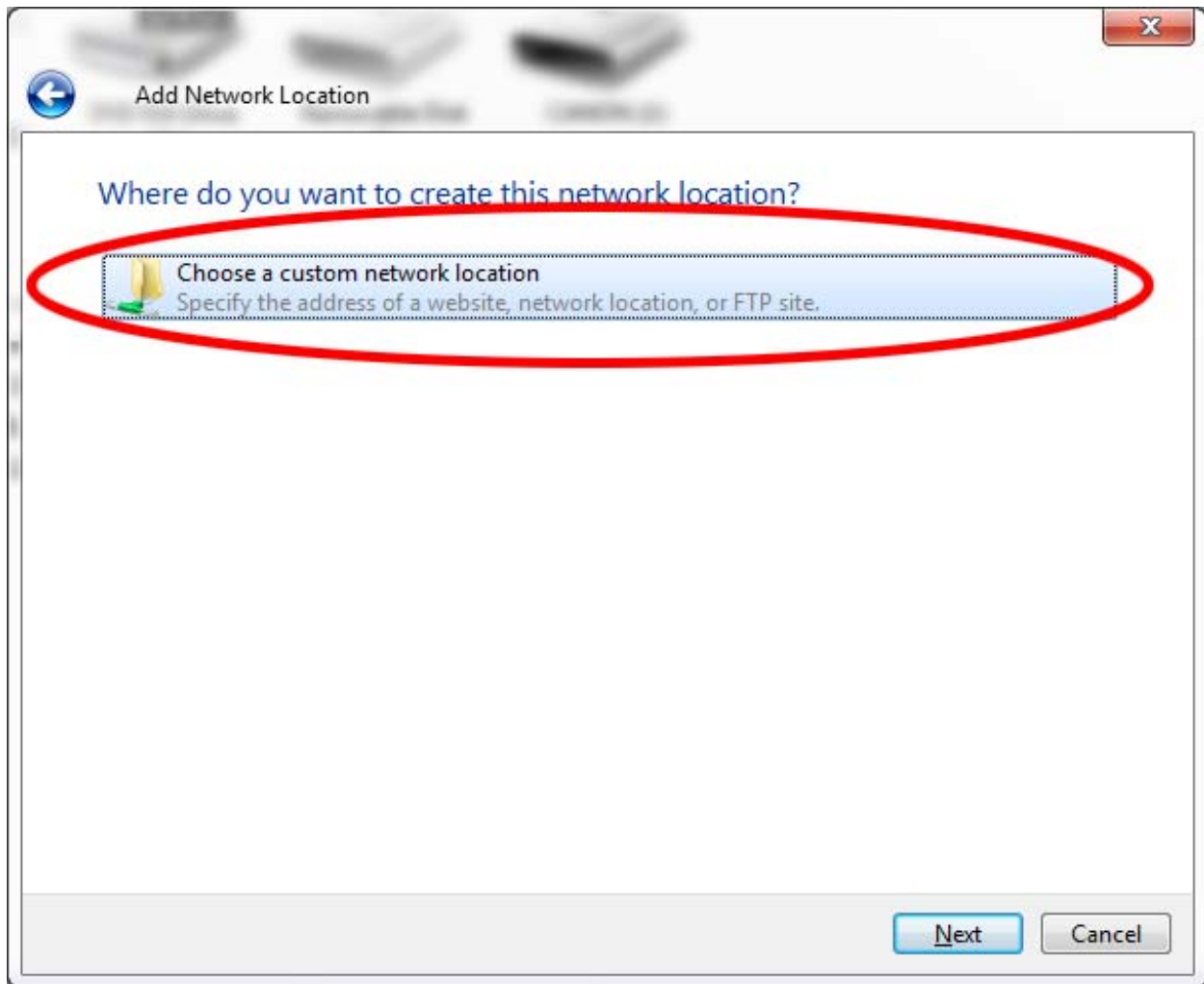
Right click in the open white space below the drives you have listed, and select Add a Network location.



Hit Next.



Make sure Choose a custom network location is selected (likely your only choice) and hit Next.



In Internet or network address, enter the path to the network drive that you're trying to connect to. If you don't know this, you can get it from the IT staff. Hit Next.

Specify the location of your website

Type the address of the website, FTP site, or network location that this shortcut will open.

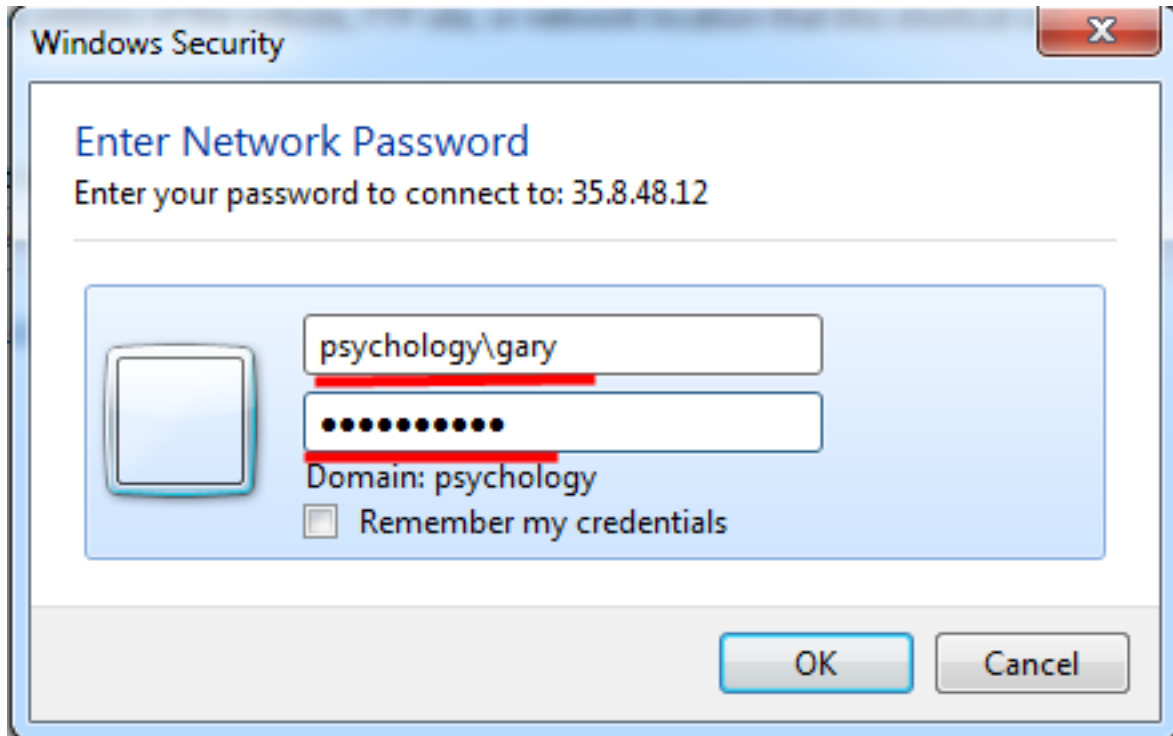
Internet or network address:

Browse...

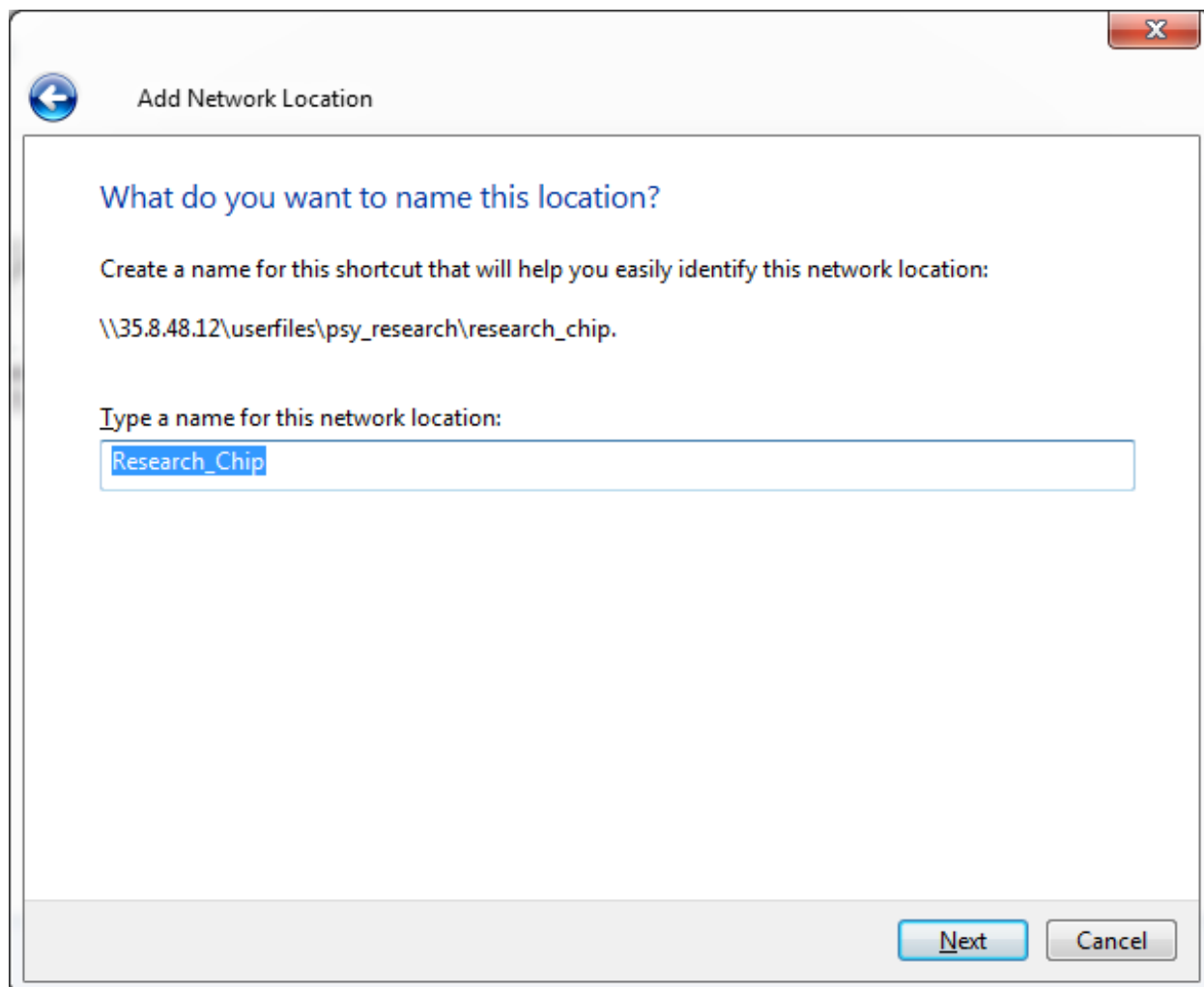
[View examples](#)

Next Cancel

There may be a longer pause here before you get prompted for a username and password. When you do get the prompt, enter the username and password that you use for logging into computers in the department. However, you **must** also put “psychology\” in front of your username. If you forget this, it will not work.



Now you'll be prompted to name the network location. Generally the default is fine, but feel free to name it whatever you want to make it easy for you to remember. Hit Next.



← Add Network Location

What do you want to name this location?

Create a name for this shortcut that will help you easily identify this network location:

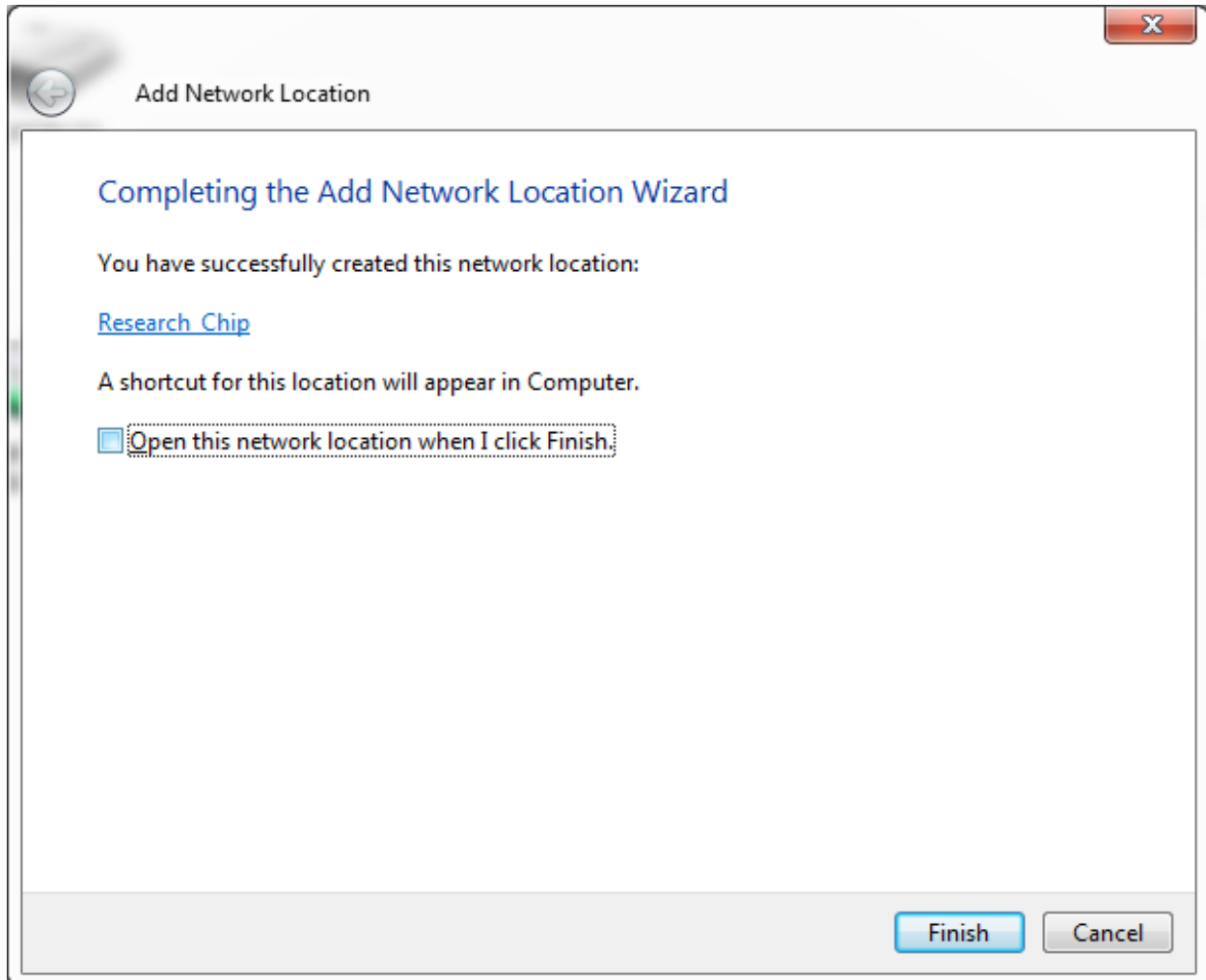
\\35.8.48.12\userfiles\psy_research\research_chip.

Type a name for this network location:

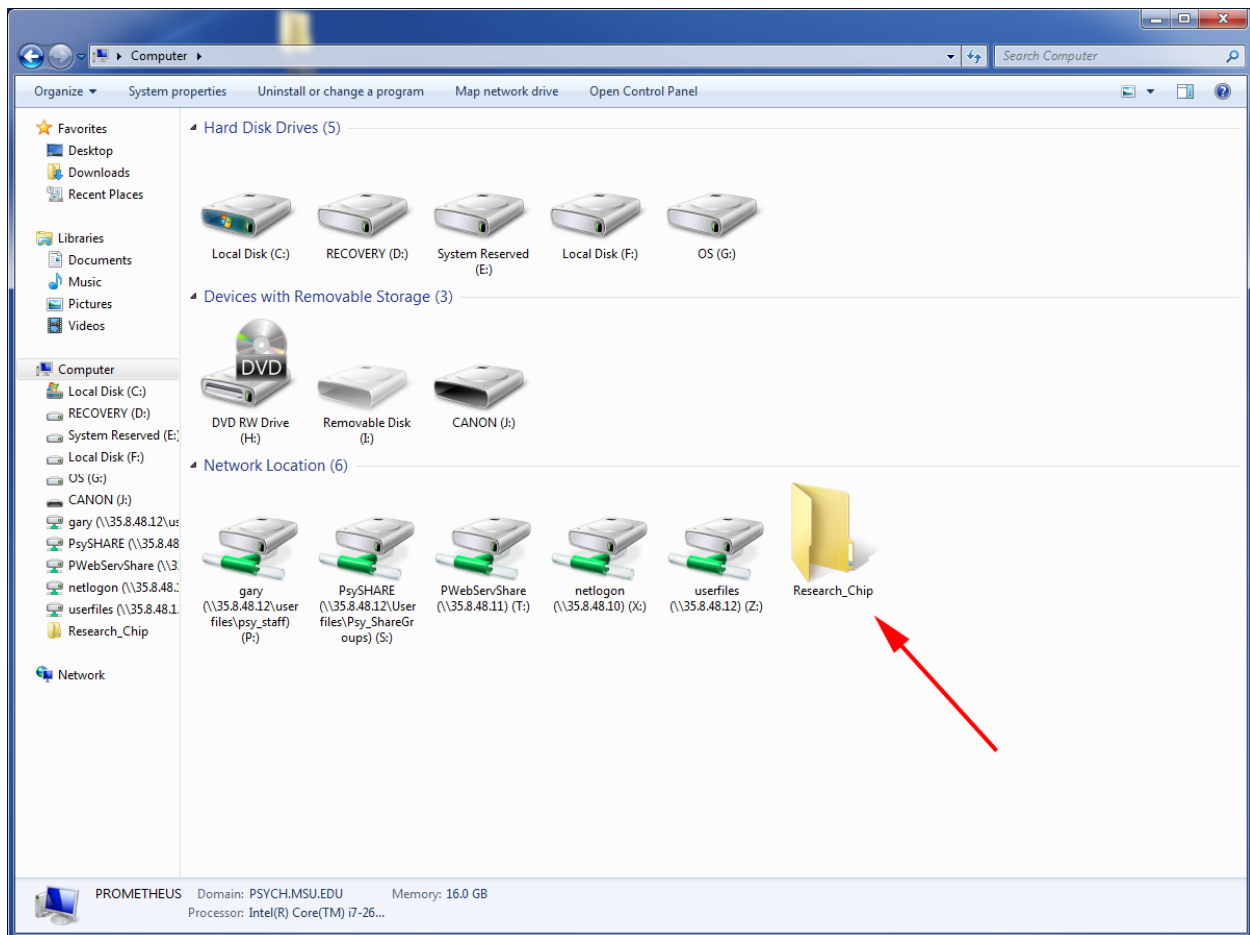
Research_Chip

Next Cancel

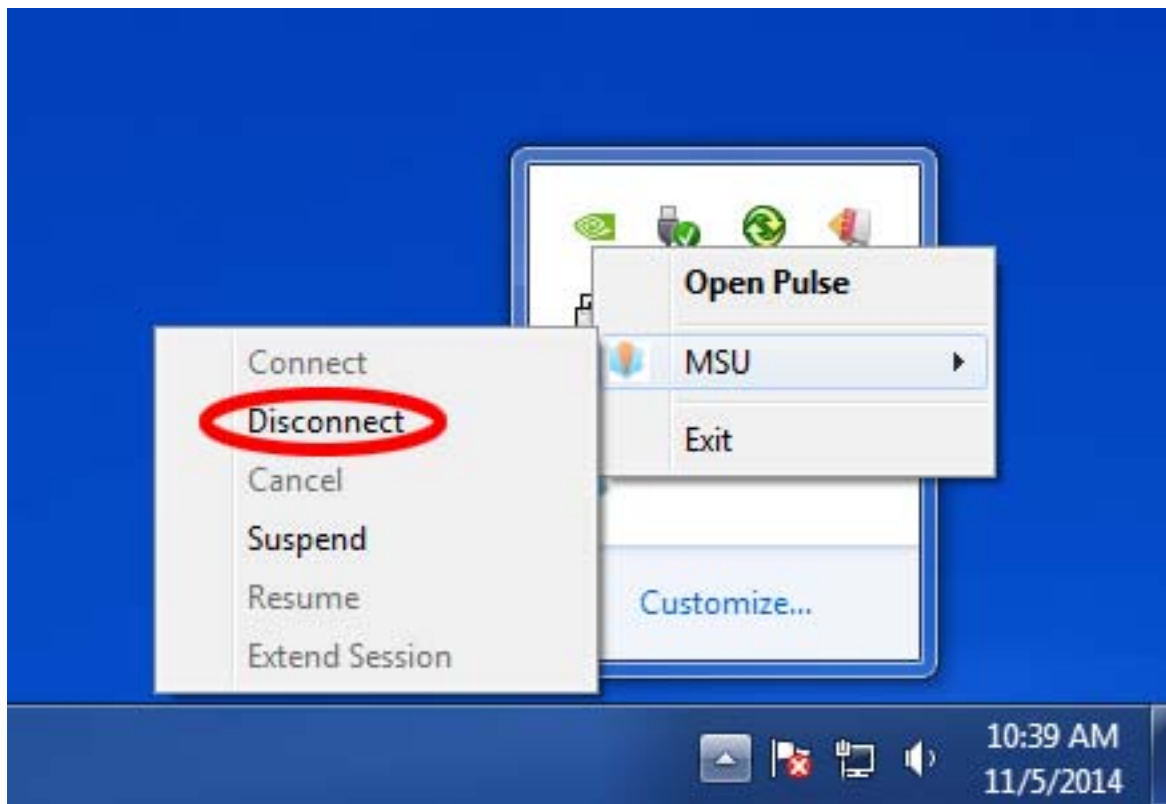
You should then reach a screen that says you've successfully created this network location. If you click the check box for Open this network location when I click Finish, the network drive will open up when you hit the Finish button, which is a good way to confirm that it's working. Regardless of whether you do that, hit Finish.



If you go back to the drive listing where you started this process, you'll now see a listing for the network drive that you added. You can also add any additional drives you might need to add at this point.



When you're done using the network drives, you can disconnect the VPN. To do this, go back to the system tray, and click on the Pulse client icon and go to the menu item for the VPN name that you created, then select Disconnect.



Also note that for your future use, you can start the vpn connection by going to this same spot, without having to open up the Pulse client. The Pulse client software will start automatically when you start Windows, so that icon should always be available in the system tray.